

## DINNERWARE GENERAL PRICES

The Updated Price Guide to Book One thoroughly gives the values for each item in all five patterns in the most collectible colors. Listed below are the 'general' values for dinnerware items.

Creamer and sugar	\$10.00-\$12.00
Cup	3.00- 4.50
Pitcher, 2 quart	11.00- 15.00
Saucer	3.00- 3.50
Plate, dinner	6.00- 7.00
Plate, salad	4.00- 6.00
Plate, bread & butter	4.00- 5.50
Salt and pepper shakers	5.50- 10.00
Teapot	8.00- 15.00
Tumbler	4.00- 5.00
Butter dish	10.00- 12.50
Mug	3.00- 5.50
Bowl, 1 quart-2 quart	4.50- 6.00
Bowl, 14 ounce-20 ounce	4.00- 6.75
Bowl, 5 ounce-13 ounce	3.00- 4.00
Sauce boat	4.00- 7.00
Spoonholder	5.00- 5.50
Platter, 17"	19.00- 20.00
Platter, 16"	12.00- 18.00
Platter, 13"	9.00- 9.50
Baker, Individual	4.00- 6.00
Baker, 1½-2 quarts	7.00- 14.00
Baker, 3 quart-5 quart	11.00- 20.00
Warmer for bakers	4.00- 6.00

## 1936 CATALOG

The photos on the next few pages were taken from the oldest known Frankoma catalog--the 1936 edition. This catalog was printed while the Frankoma plant was in Norman, Oklahoma and shows the pot and leopard mark.

The glazes being used at the time were:

Verde Green

Verde Bronze

Old Gold

Texas Brown

Jade Green

Fawn Brown

Blue Grey Jade

Onyx Black (figures only)

Ivory

Pompeian Bronze (figures only)

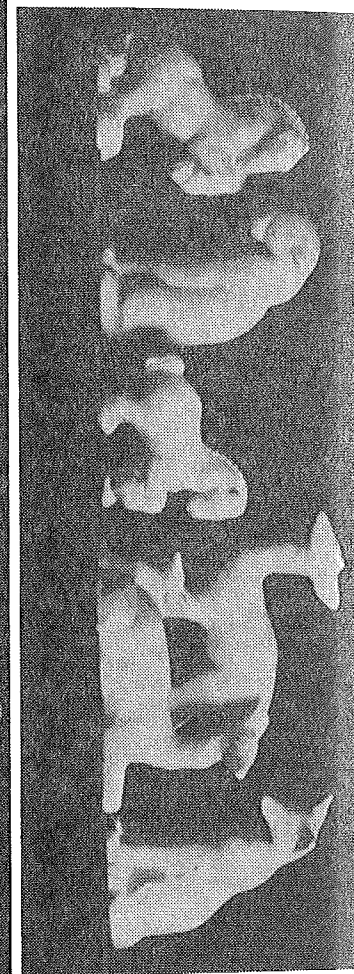
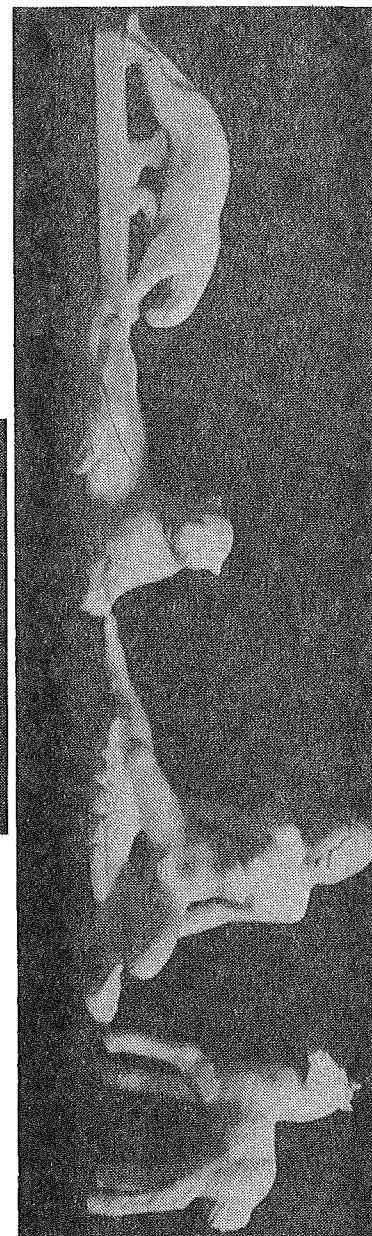
It is important to remember that Mr. Frank was 'experimenting' with his new business when this catalog was printed. Very few pieces were made in some of the colors, such as Texas Brown and Fawn Brown. There was probably also very little difference in the two colors.

Later, some of the 'names' were changed but the colors remained the same. Such is the case with Old Gold becoming Desert Gold.

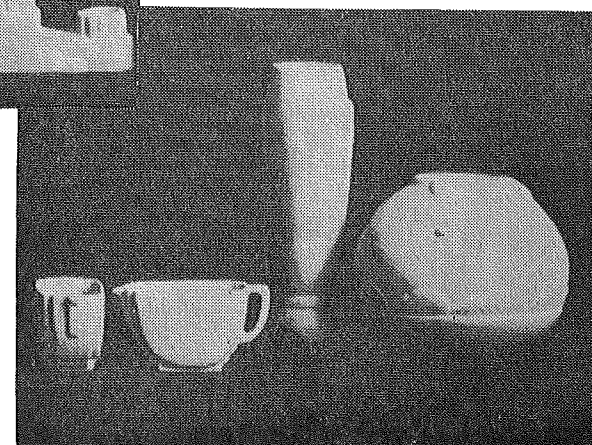
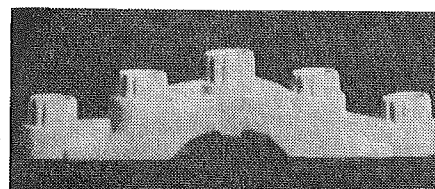
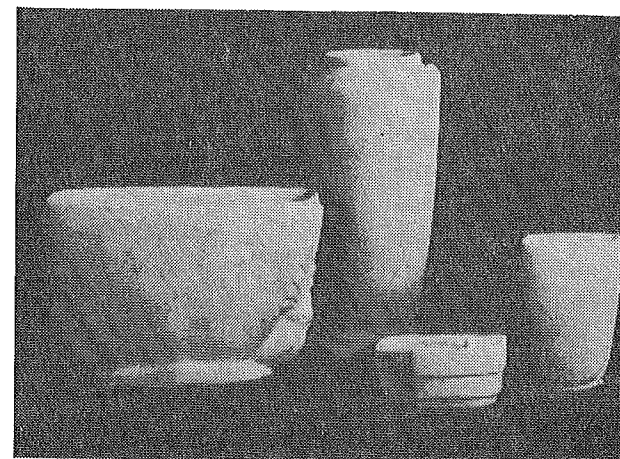
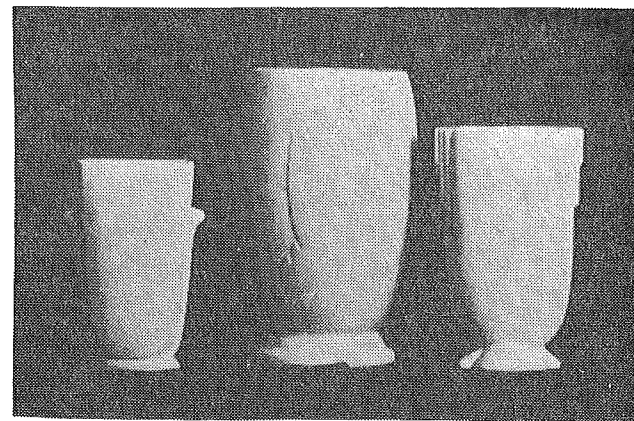
107	Rearing clydesdale	\$ 9.00-17-50*
114	Seated ocelot	10.00-20.00*
108	Prancing percheron (don't confuse this with #138 shown in Book One)	35.00
109	Deer group, 1936 (this item is very rare; I have never seen it and Joniece has seen only one)	225.00
105	Coyote pup, 1936	25.00
104	Walking ocelot, 1936	20.00
116	Reclining puma, 1936	30.00
113	Fan dancer	60.00-125.00*
117	Prancing colt	18.00- 20.00*
103	Charging tiger, 1936	20.00

If any items are found with the  
pot and leopard mark clearly shown,  
add approximately 75% to the values  
shown in this section

\*See Book One and/or updated price guide  
for additional information.

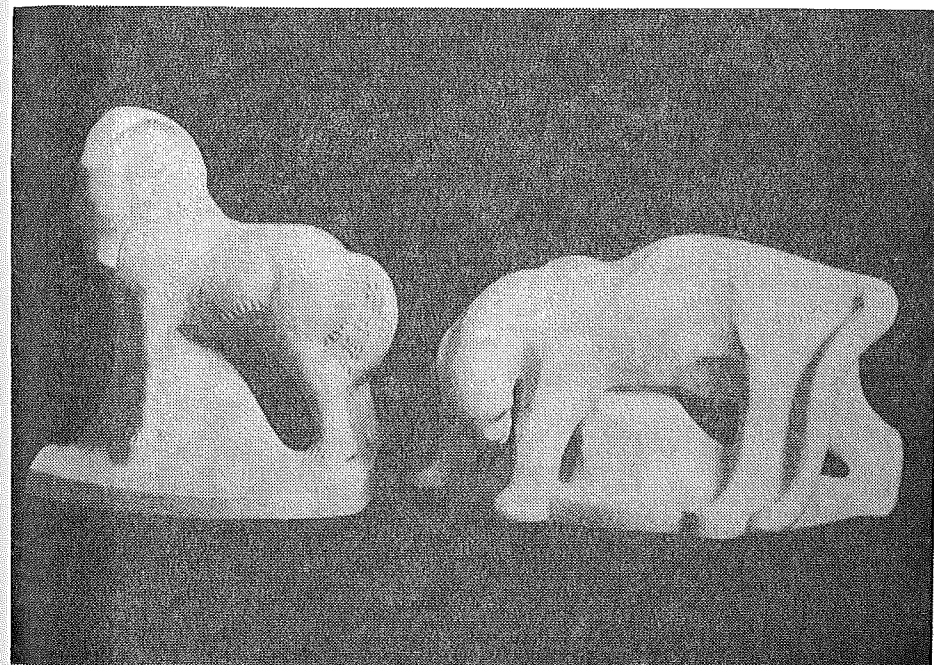
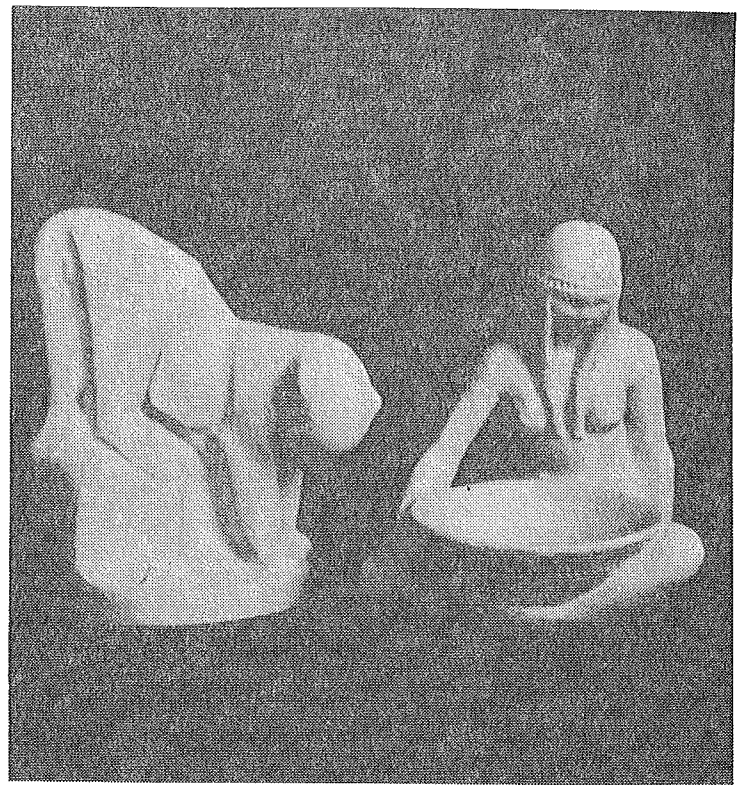


40	Flat vase, 7", 1936	\$12.00
75	Round carved vase, 1936-1942	29.00
41	Stepped handle vase, 1936	15.00
85	Bird handle vase, 1936-1942	47.50
78	Tall round vase, 1936-1942 (see page 26)	30.00
456	Ashtray, 1936-1964	6.00
39	Small flat vase, 1936	9.00
306	Candelabrum, 1936-1942 (see page 50)	22.50
42/42A	Creamer and sugar, 1936-1942	9.00 pr.
43	Tall round vase, 1936-1953; 1962- 1980 (see page 24)	5.00
70	Round carved jar, 1936-1949 (see page 28)	25.00



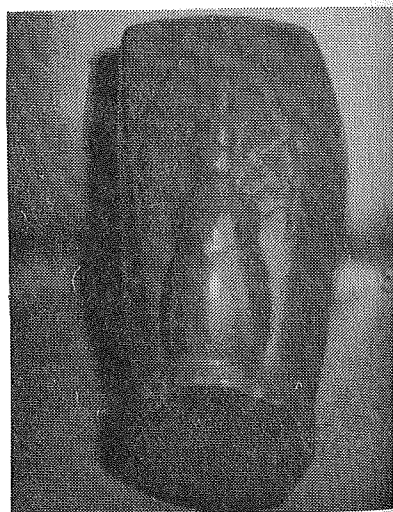
422	Ocelot bookends (see page 66)	\$12.00-29.50*
123	Indian ashtray	15.00-31.00*
420	Horse bookends	7.50-26.50*
421	Leopard bookends (see page 66)	15.00-24.50*

\*See Book One and/or updated price guide  
for more information.

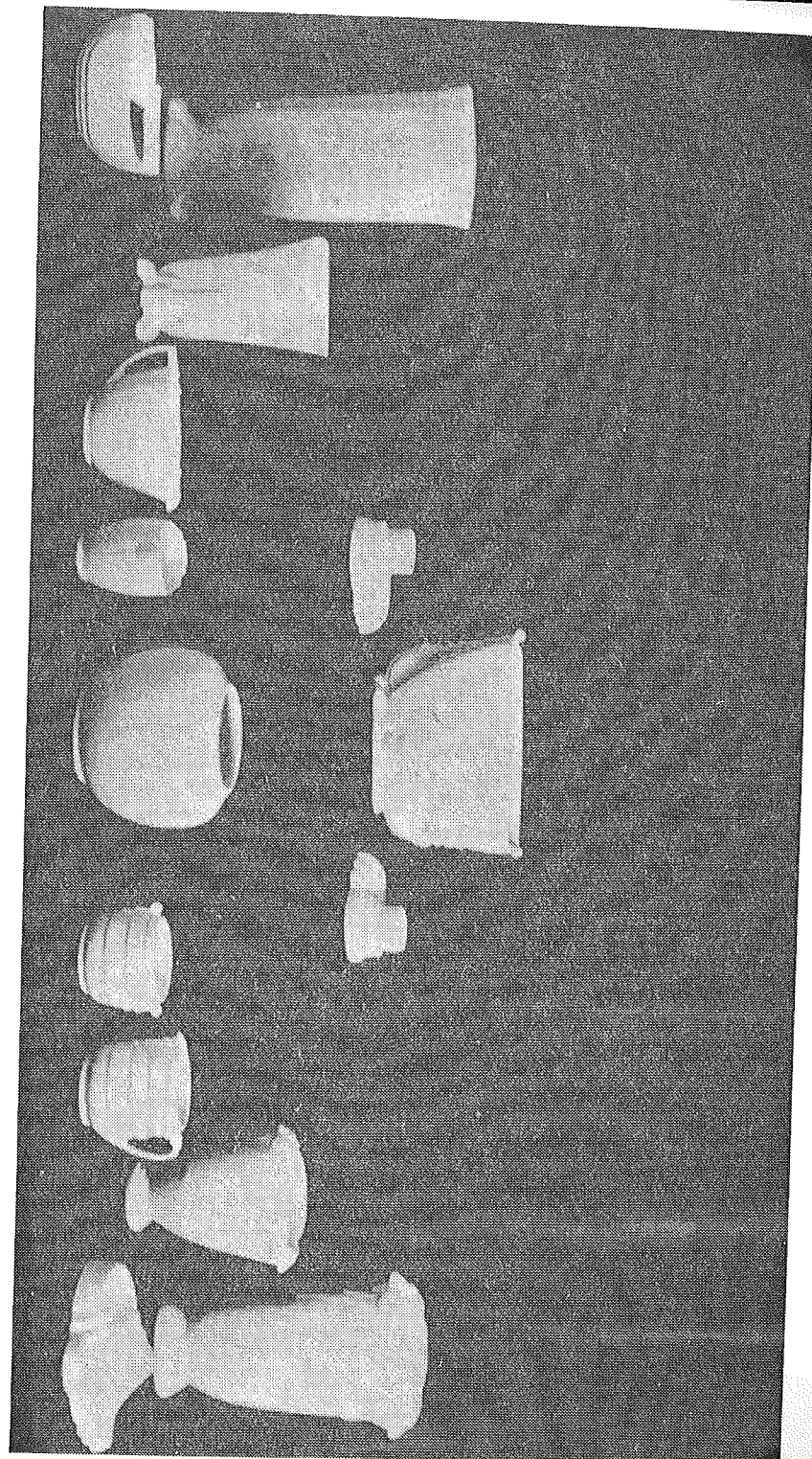


85	Bird handled vase (top center) 1936-1942; see side view below	\$47.50
302	Candleholders, 1936 (see page 48)	10.00
455	Cigar ashtray, 1936-1955 (see page 32)	8.00
76	Tall flat vase, 12", 1936- 1949 (see page 24)	40.00*
36	Flat vase, 6½", 1936-1942 (see page 24)	45.00
33/33A	Creamer and sugar, 1936-1938	19.00 pr.
24	Round jar, 1936	21.50
18/18A	Creamer and sugar, 1936-1942	19.00 pr.
38	Small ram's head vase, 1936- 1949 (see page 24)	35.00
74	Tall ram's head vase, 1936- 1938 (see page 24)	35.00
454	Pipe rest, 1936-1942 (see page 34)	42.00

\*See Book One and/or updated  
price guide for additional in-  
formation

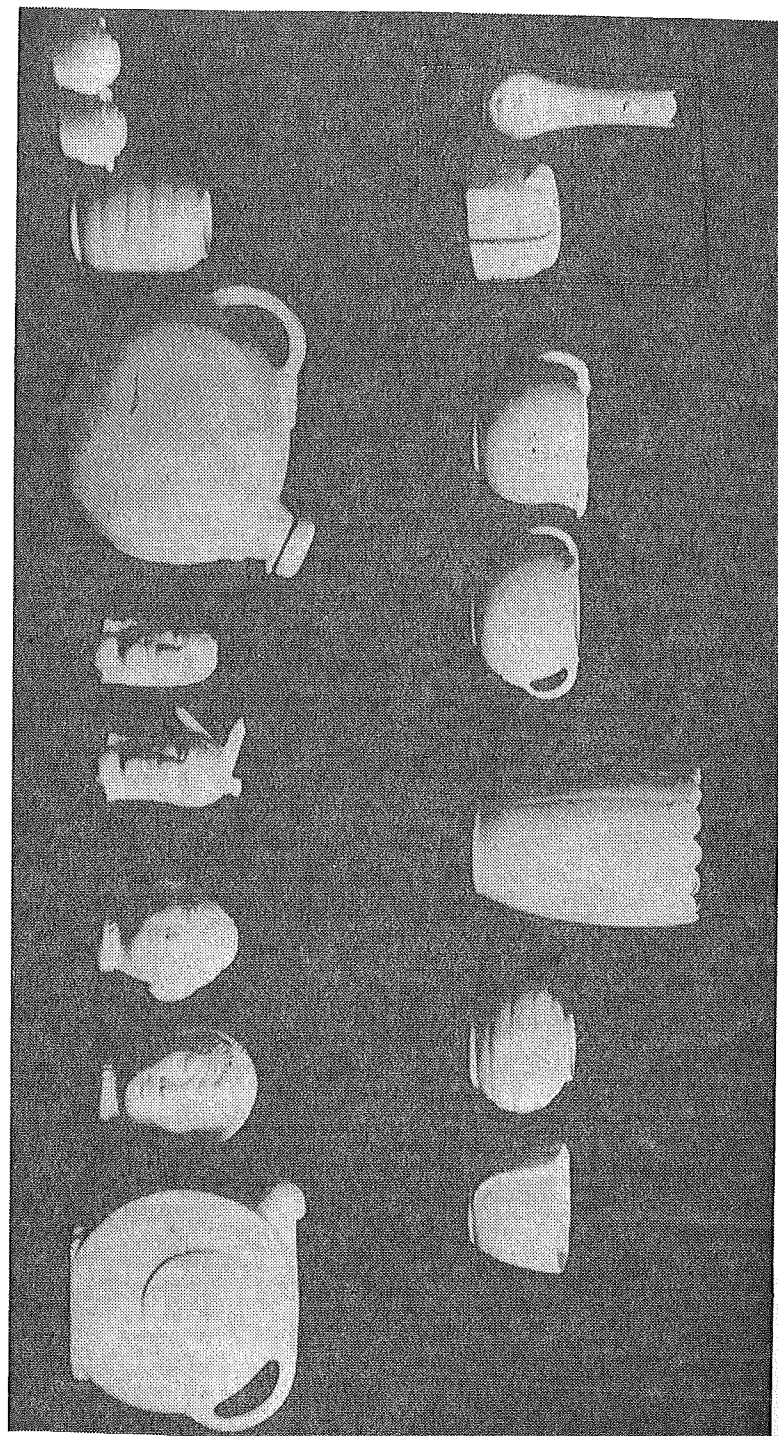


Side View No. 85



29	Bud vase, 1936-1942 (see page 36)	\$	15.00
45	Modern salt & pepper, 1936-1942 (this item was #45H in 1942)		12.50pr. 12.50
23/23A	Round creamer & sugar, 1936		12.00pr.
79	Scalloped top vase, 9", 1936-1949 (see page 24)		18.00-24.00*
13	Low ringed vase, 1936-1951		11.00
30	Square bowl, 1936-1942		15.00
44	Small salt & pepper, 1936- 1938		9.50pr.
12	Tall ringed vase, 1936-1938		12.50
86	Jug, half gallon, 1936-1960 (see page 62)		17.00
131/132	Indian masks, 1936-1942		12.00ea.
133/134	Oriental masks, 1936-1938		15.00ea.
88	Refrigerator jug, one qt., 1936-1953, (see page 87)		12.00

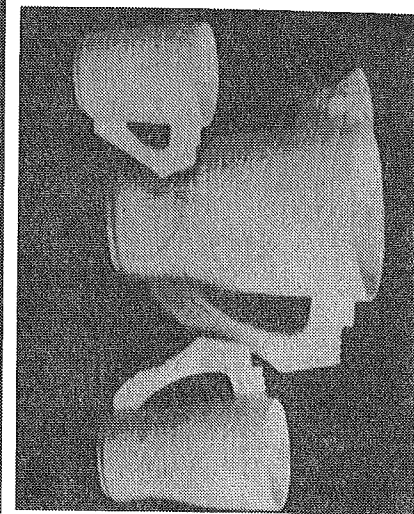
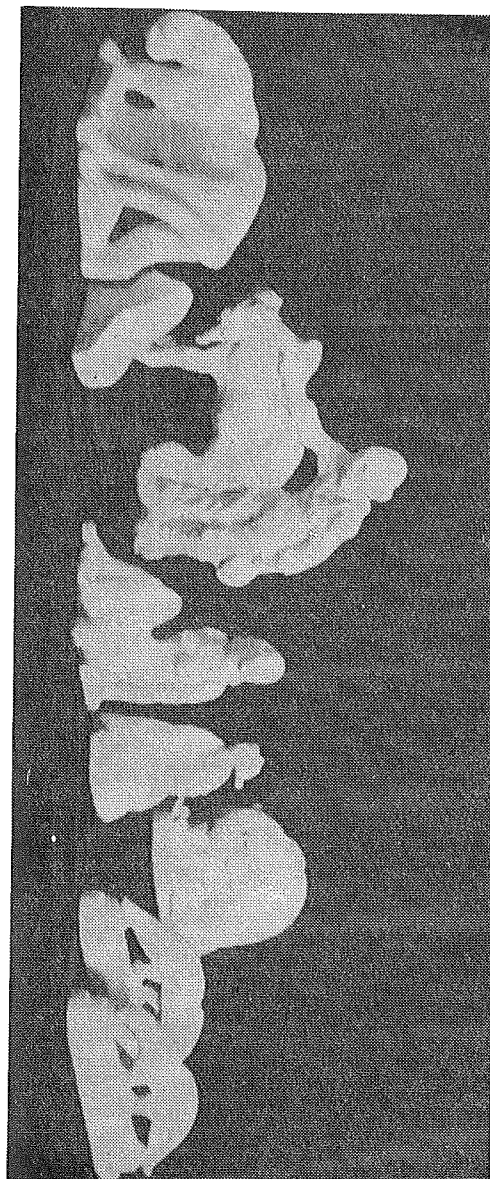
\* See Book One and/or updated price guide  
for additional information.



83	Mayan mug, 1936 (see page 62)	\$	12.00*
82	Mayan pitcher		30.00*
84	Mayan beer mug		12.00*
421	Leopard bookends (see page 66)		15.00-24.50*
421A	Same as #421 except with dud ends		22.00
425	Seated figure bookends (see page 66)		15.00-34.00*
426	Sea horse bookends, 1936 (These are very rare. One is on display in the Ross C. Purdy Museum which opened December 3, 1981 at the American Ceramic Society in Columbus, Ohio.)		150.00ea.
424	Walking ocelot bookends, 1936		60.00

The Man with Animal and the Bear  
are so rare I'm not able to quote  
a value for them at this time.

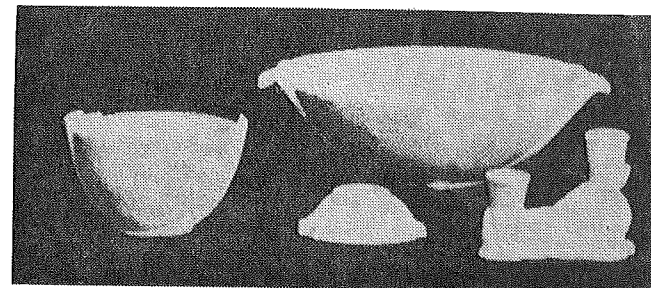
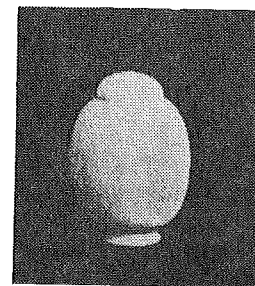
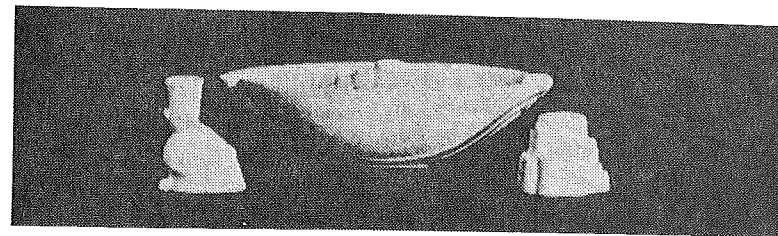
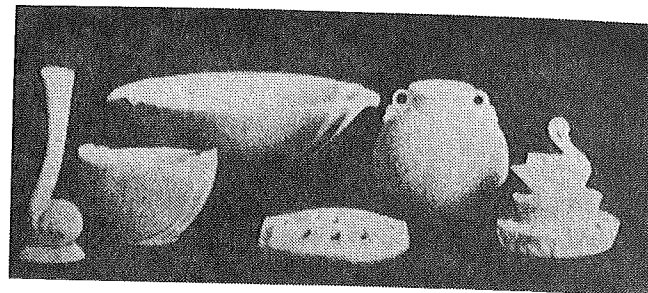
\* See Book One and/or updated price guide  
for additional information.



31	Snail bud vase, 1936-1982 (see page 24)	\$14.00* 3.00**
34	Mint bowl, 1936	6.00
201	Bowl, 9", 1936-1953 flower frog for bowl	11.00 12.00
37	Ivy bowl, 1936	14.00
303	Single candleholder, 1936 (see page 48)	8.00
202	Bowl, 1936-1949 flower frog for bowl	12.00 12.00
305	Spiral candleholder, 1936	12.00
32	Rose jar, 1936	27.50
35	Large mint dish, 1936-1982	7.50* 3.50**
300	Candleholders, 1936-1942 (see page 48)	7.00
200	Bowl, 11", 1936-1942 (see page 38) flower frog for bowl	14.00 25.00
304	Double candleholders, 1936-1976 (see page 48)	6.00

\* discontinued color value

\*\* current color value





21	Vase, 1936-1938 (See page 24)	\$15.00
80	Pitcher, half gallon, 1936-1982	15.00* 8.50**
93	Creamer & sugar, 1936	9.50pr.
91	Waffle pitcher, 1936-1942	9.00
92	Syrup pitcher, 1936-1942	6.50
87	Iced tea pitcher, 1936-1964 Note the #87 on page 62 is different	11.00
27	Vase, 1936-1938 (see page 28)	50.00
28	Vase, 1936-1951 (see page 28)	30.00
94	Large tea pitcher, 1936	32.50
95	Tea cup, 1936	4.50ea.
14	Chinese bottle vase, 1936-1938	16.50

\* discontinued color value  
\*\* current color value

